



BOAT SALES

LAKELAND LEISURE ESTATES



Yemaya - Widebeam

Price: £120,000

Key Features

Berths:	3
Length & Type:	59ft x 10ft Widebeam
Year:	2008

Description

Step aboard Yemaya, a striking 59ft x 10ft widebeam that perfectly balances contemporary luxury with timeless craftsmanship. Built by the renowned Liverpool Boat Company and expertly fitted out by Brad Ingram, this spacious 2-bedroom boat is a dream home on the water. With an elegant reverse layout and a host of modern conveniences, Yemaya is designed for both comfort and off-grid living, making it ideal for cruising or mooring up and enjoying a tranquil life afloat.

Yemaya boasts a sleek profile and comes equipped with a brand-new Titan pram cover (fitted in 2020), adding extra protection and usable space at the stern. The boat is designed for off-grid independence, featuring 6 Trojan leisure batteries and 1600 watts of solar panels installed in 2020, ensuring ample power for extended stays on the water. A shoreline connection is also available when needed, giving you the best of both worlds. The Wabasto central heating system with radiators throughout, combined with a cosy multifuel stove in the lounge, ensures you stay warm and comfortable no matter the season.

Enter the heart of Yemaya's interior, where the fully-fitted galley is both functional and stylish. The under-counter and wall-mounted units offer plenty of storage, while the wooden countertops exude a natural charm. Cooking is a pleasure with the 4-ring hob, oven, and grill, and the under-counter fridge provides ample space for your groceries. A deep sink with a drainer makes clean-up easy, and the breakfast bar is the perfect spot for casual dining or morning coffee, while enjoying views out onto the water.

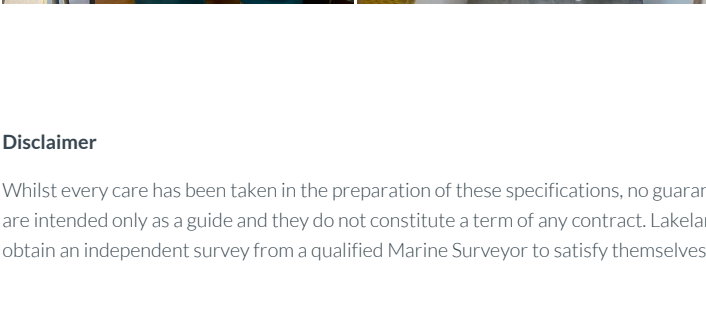
The spacious lounge is designed for relaxation. The centrepiece is the multifuel stove, radiating warmth throughout the open-plan living area. Beneath the stern steps, you'll find practical log storage, neatly tucked away. The entire space is carpeted, creating a soft and comfortable atmosphere where you can unwind after a long day. This area is perfect for cosy evenings or entertaining guests.

The master bedroom offers a peaceful escape with plenty of space for a double bed. Two large double wardrobes provide ample storage for clothing and personal items, while bungs for the porthole windows add an extra layer of privacy and insulation. The room is perfectly sized to create a calming and restful retreat.

The second bedroom is equally versatile, featuring a single bed with a fitted desk beneath, making it ideal as a guest room, office, or hobby space. Shelving above the desk adds convenient storage, and the layout makes great use of the room's compact size.

The well-appointed bathroom is both stylish and functional. The vanity unit with a sink and a large wall-mounted mirror add a touch of elegance, while the quadrant shower offers a refreshing experience. The heated towel radiator keeps your towels warm and dry, and a large storage cupboard provides space for linens or other essentials. Additionally, the cupboard is plumbed for a washing machine, adding to the boat's practical conveniences.

Yemaya offers the perfect blend of comfort, practicality, and independence. Whether you're looking for a peaceful home or a cruising adventure, this beautifully crafted widebeam provides everything you need for a life on the water. With its spacious layout, modern amenities, and off-grid capabilities, Yemaya invites you to experience the charm and serenity of canal life in absolute comfort.



Disclaimer

Whilst every care has been taken in the preparation of these specifications, no guarantee is given or implied as to their accuracy. These particulars are intended only as a guide and they do not constitute a term of any contract. Lakeland Leisure Estates Ltd advises prospective purchasers to obtain an independent survey from a qualified Marine Surveyor to satisfy themselves as to the condition of the craft.

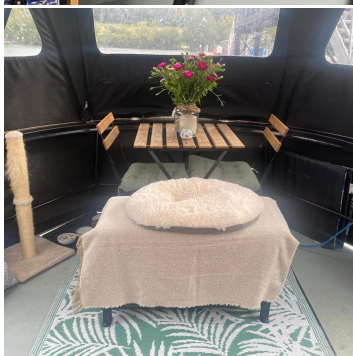
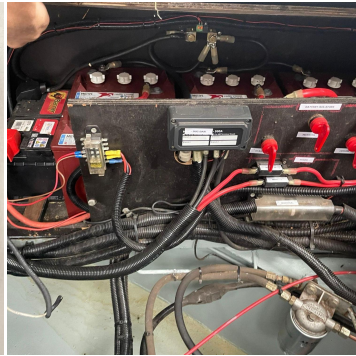
Contact Us

Call: 07801 962636

Email: roydon@lakelandleisureboatsales.co.uk

www.lakelandleisureboatsales.co.uk





Additional Specs

- **Length/ Boat Style:** 59' Widebeam
- **Year:** 2008
- **Number of bathrooms** 1
- **Berths** 3
- **Hull By/ Fit out by:** Liverpool boat company – Brad Ingram
- **Layout stern to bow:** Saloon, galley, second bedroom, bathroom, master bedroom
- **Engine and gearbox:** Isuzu 55 – PRM150D2
- **Boat Safety Certificate:** 20/7/28
- **Last Blacking + type:** Blacked 2022
- **Inspection hatch and location:** Under stern steps
- **P/out or Cassette:** Pump out
- **Insulation:** Spray foam
- **Last Survey:** 2022
- **External Covers** Pram cover
- **Side Hatches and location:** Portside hallway
- **Batteries:** 6 leisure 1 starter
- **Electric Supply:** Shoreline hookup, 12v lighting, 240v sockets, engine
- **Water capacity** 390 Litres
- **Fuel capacity** 295 Litres
- **Waste water capacity** 255 Litres
- **Hot Water Supply:** Wabasto pro thermo 90 marine heater
- **Cabin Heating:** Wabasto pro thermo and multi fuel stove.

Disclaimer

Whilst every care has been taken in the preparation of these specifications, no guarantee is given or implied as to their accuracy. These particulars are intended only as a guide and they do not constitute a term of any contract. Lakeland Leisure Estates Ltd advises prospective purchasers to obtain an independent survey from a qualified Marine Surveyor to satisfy themselves as to the condition of the craft.

Contact Us

Call: 07801 962636

Email: roydon@lakelandleisureboatsales.co.uk

www.lakelandleisureboatsales.co.uk

