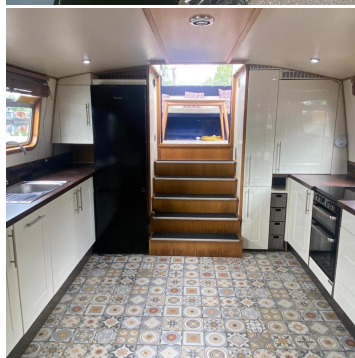




# BOAT SALES

LAKELAND LEISURE ESTATES



## Slow and Curious - Widebeam

**Price: £135,000**

### Key Features

|                           |               |
|---------------------------|---------------|
| <b>Berths:</b>            | 4             |
| <b>Length &amp; Type:</b> | 70ft Widebeam |
| <b>Year:</b>              | 2013          |

### Description

Welcome aboard Slow and Curious, a luxurious and beautifully designed 70-foot wide beam canal boat crafted in 2013 by Viking Boat Builders. This stunning vessel offers a perfect blend of comfort and modern elegance, making it an ideal choice for those looking to enjoy both marina living and continuous cruising. With its reverse layout, this boat maximises space and functionality, creating a welcoming and stylish environment.

Step into the spacious and well-appointed galley, where culinary dreams come to life. Equipped with a four-burner hob, oven and grill, 240v fridge freezer, and dishwasher, this kitchen is both practical and chic. The stainless steel sink and drainer add a touch of sophistication, while the ample kitchen units and expansive worktops provide plenty of space for meal preparation and storage. Whether you're a gourmet chef or a casual cook, the galley on Slow and Curious is designed to meet all your needs.

The lounge area exudes warmth and comfort, centred around a Stratford multifuel stove that provides cosy heat on cooler days. A stylish sideboard and a comfortable sofa make this space perfect for relaxation. The open-plan design extends to the dining area, featuring an extendable table and chairs, ideal for hosting dinners or enjoying a quiet meal. This inviting lounge is a wonderful place to unwind, entertain, and make lasting memories.

The guest bedroom on Slow and Curious is both versatile and comfortable. The single bed easily converts into a double bed, offering flexibility for different sleeping arrangements. A wardrobe provides ample storage space for clothes and personal items, ensuring your guests have everything they need for a comfortable stay.

The bathroom is a sanctuary of modern design and convenience. It features a quadrant shower, pump-out toilet, and a basin with a vanity unit. A built-in washing machine adds practicality, while additional storage units keep everything tidy. The heated towel rail ensures warm towels are always at hand. Modern tiling throughout the bathroom adds a clean and contemporary touch, enhancing the overall aesthetic of this elegant space.

Retreat to the master bedroom, a haven of comfort and luxury. The king-size ottoman bed, complete with a fitted headboard, promises restful nights. Built-in wardrobes and cupboards, along with oak bedside tables and a drawer unit, provide ample storage and add to the room's sophisticated charm. This serene space is perfect for relaxation and rejuvenation.

Externally, Slow and Curious is just as impressive. The boat boasts a pram and cratch cover, ensuring protection from the elements. A bow thruster adds ease to manoeuvring, and the port-side saloon hatch offers additional light and ventilation. The boat is powered by a reliable Beta Kubota 75Hp engine and is equipped with a comprehensive electrical system, including shoreline hook-up, 12v lighting, 240v sockets, solar panels, a generator, and an inverter. The spray foam insulation ensures year-round comfort, and the hull's thickness and recent survey guarantee peace of mind.

Slow and Curious is fitted with all the modern amenities you could desire. Hot water is supplied via the engine and a Webasto system, while cabin heating is provided by both a multi-fuel stove and Webasto central heating. Two 13kg propane gas cylinders ensure you have plenty of fuel for cooking and heating.

This beautiful boat, with its clean and modern feel, contemporary colour scheme, and stylish tiling, offers an unparalleled living experience on the water. Slow and Curious is more than just a boat; it's a lifestyle, offering comfort, luxury, and endless adventures.

### Disclaimer

Whilst every care has been taken in the preparation of these specifications, no guarantee is given or implied as to their accuracy. These particulars are intended only as a guide and they do not constitute a term of any contract. Lakeland Leisure Estates Ltd advises prospective purchasers to obtain an independent survey from a qualified Marine Surveyor to satisfy themselves as to the condition of the craft.

Contact Us

Call: 07801 962636

Email: [roydon@lakelandleisureboatsales.co.uk](mailto:roydon@lakelandleisureboatsales.co.uk)

[www.lakelandleisureboatsales.co.uk](http://www.lakelandleisureboatsales.co.uk)





## Additional Specs

- **Length/ Boat Style:** 70ft Wide beam
- **Year:** 2013
- **Number of bathrooms** 1
- **Berths** 4
- **Hull By/ Fit out by:** Viking Boat Builders
- **Layout stern to bow:** Galley, dinette, saloon, bathroom, bedroom
- **Engine and gearbox:** Beta Kubota 75Hp
- **Boat Safety Certificate:** 2/12/2025
- **Last Blacking + type:** May 2024, 2 pac epoxy and 4 anodes
- **Hull thickness:** 10:6:4:4
- **Inspection hatch and location:** Under stern/bow stairs
- **P/out or Cassette:** Pump out toilet
- **Insulation:** Spray foam
- **Last Survey:** Hull survey 28/5/24
- **External Covers** Pram and Cratch cover
- **Bow thruster** yes
- **Side Hatches and location:** Port side saloon.
- **Batteries:** 1 starter 4 leisure Carbon Gel Ultra deep cycle
- **Electric Supply:** Shoreline hookup, 12v lighting, 240v sockets, 4 x 430 watt Solar and Beta generator set 7Kw, Victron 300W inverter, Mppt controller, wireless alarm.
- **Galvanic Isolator:** yes
- **Hot Water Supply:** Engine, Webasto,
- **Cabin Heating:** Multi fuel stove, Webasto central heating
- **Central heating type:** Webasto
- **Gas Cylinders No+ type:** 2 x 13kg propane

### Disclaimer

Whilst every care has been taken in the preparation of these specifications, no guarantee is given or implied as to their accuracy. These particulars are intended only as a guide and they do not constitute a term of any contract. Lakeland Leisure Estates Ltd advises prospective purchasers to obtain an independent survey from a qualified Marine Surveyor to satisfy themselves as to the condition of the craft.

Contact Us

Call: 07801 962636

Email: [roydon@lakelandleisureboatsales.co.uk](mailto:roydon@lakelandleisureboatsales.co.uk)

[www.lakelandleisureboatsales.co.uk](http://www.lakelandleisureboatsales.co.uk)

