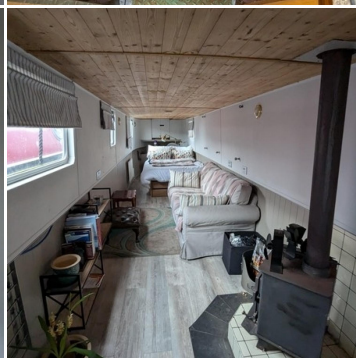
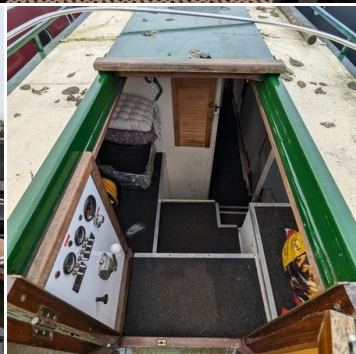
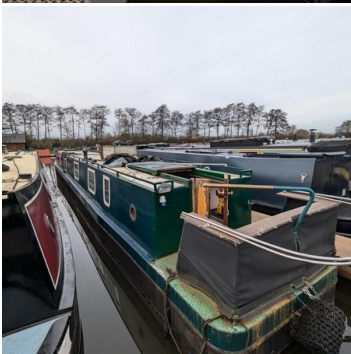




BOAT SALES

LAKELAND LEISURE ESTATES



Red Panda - Cruiser Stern Narrowboat

Price: £45,000

Key Features

Berths:	4
Length & Type:	62ft Narrowboat
Year:	1972

Description

Welcome to Red Panda, a 62ft cruiser stern narrowboat that beautifully combines classic charm with modern comforts. Built in 1972, this 4-berth vessel offers a spacious open-plan design, making it the ideal choice for anyone seeking a peaceful escape or a unique way of life on the water. Large double-glazed windows flood the interior with natural light while providing excellent insulation, creating a bright and welcoming atmosphere.

The heart of Red Panda is its stunning galley, designed with both functionality and aesthetics in mind. The Indesit gas cooker, complete with a grill and 4-burner hob, allows for effortless meal preparation. A Paloma gas water heater ensures hot water on demand, while marble worktops bring an elegant touch to the space. The Belfast sink adds a rustic charm, and the well-thought-out storage solutions make organising essentials a breeze. A cosy breakfast bar invites you to enjoy casual meals or a morning coffee. With vinyl flooring for easy maintenance, this galley is as practical as it is stylish.

Unwind in the lounge, a cosy haven where thoughtful features create the perfect retreat. The multifuel stove radiates warmth, offering comfort on chilly evenings, while electric radiators provide an additional heating option. A convenient side hatch lets in fresh air and frames picturesque views of the surrounding waterways. The sofa bed adds versatility, easily transforming the space for overnight guests. With a bookshelf to display your favourite novels and laminate flooring for durability and style, this lounge is the ideal spot to relax after a day of cruising.

Your sanctuary aboard Red Panda is the serene master bedroom, featuring a double bed with storage underneath, perfect for keeping your belongings tidy. This well-appointed space offers a tranquil retreat for restful nights, ensuring you wake refreshed and ready for your next adventure.

The thoughtfully designed bathroom is equipped with everything you need for onboard living. A pump-out toilet ensures convenience, while the sink with storage underneath keeps your toiletries organised. The shower with mixer taps provides a refreshing start or end to your day, and additional storage cupboards offer ample space for your linens and essentials.

With its blend of classic craftsmanship, practical features, and homely touches, Red Panda offers a unique opportunity to embrace life on the water. Whether you're planning leisurely canal journeys or looking for a charming floating home, this cruiser stern narrowboat is ready to make your dreams a reality.

Disclaimer

Whilst every care has been taken in the preparation of these specifications, no guarantee is given or implied as to their accuracy. These particulars are intended only as a guide and they do not constitute a term of any contract. Lakeland Leisure Estates Ltd advises prospective purchasers to obtain an independent survey from a qualified Marine Surveyor to satisfy themselves as to the condition of the craft.

Contact Us

Call: 07354902086

Email: greathaywood@lakelandleisureboatsales.co.uk

www.lakelandleisureboatsales.co.uk





Additional Specs

- **Length/ Boat Style:** 62ft Cruiser Stern Narrowboat
- **Year:** 1972
- **Berths:** 4
- **Water Tank Capacity:** 400 Litres
- **Waste Tank Capacity:** Unknown
- **Fuel Tank Capacity:** 180 Litres
- **Hull By/ Fit out by:** G M Engineering
- **Layout stern to bow:** Engine room, Bathroom, Galley, Saloon, Bedroom
- **Engine and gearbox:** BMC 1.5
- **Engine hours/Last service:** Unknown
- **Boat Safety Certificate:** Yes, Expires 21/10/2025
- **Last Blacking & type:** 25/6/2022 with Bitumen
- **Hull thickness:** 10/6/4
- **Inspection hatch and location:** Corridor by Engine room
- **P/out or Cassette:** Pump out
- **Internal cabin height:** 6ft
- **Insulation:** Spray foam and loft insulation
- **Last Survey:** Hull Survey 15/6/2022
- **External Covers:** Pram Cover
- **Bowthruster:** N/A
- **Side Hatches and location:** One side hatch located in the Galley
- **Batteries:** 1 x Starter 3 x Domestic
- **Electric Supply:** Engine, shoreline, Domestic Batteries, Sterling 1500W Inverter, Numax Battery Charger
- **Hot Water Supply:** Engine, Calorifier, Immersion, Paloma Gas water heater
- **Cabin Heating:** Multifuel stove
- **Central heating type:** Electric radiators
- **Gas Cylinders No+ type:** 2 x 13kg Propane gas cylinders

Disclaimer

Whilst every care has been taken in the preparation of these specifications, no guarantee is given or implied as to their accuracy. These particulars are intended only as a guide and they do not constitute a term of any contract. Lakeland Leisure Estates Ltd advises prospective purchasers to obtain an independent survey from a qualified Marine Surveyor to satisfy themselves as to the condition of the craft.

Contact Us

Call: 07354902086

Email: greathaywood@lakelandleisureboatsales.co.uk

www.lakelandleisureboatsales.co.uk

