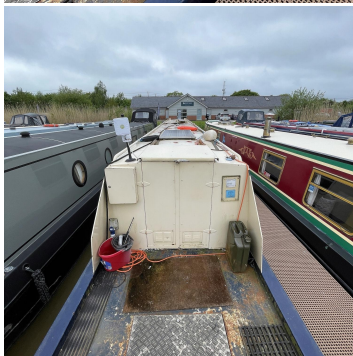
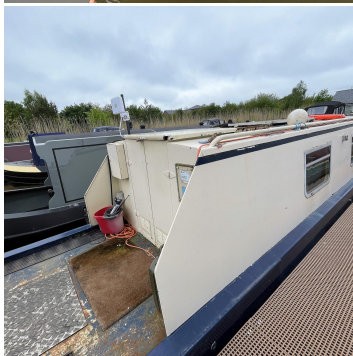




# BOAT SALES

LAKELAND LEISURE ESTATES



## One Day - Cruiser Stern

**Price: £35,000**

### Key Features

<b>Berths:</b>	4
<b>Length &amp; Type:</b>	58ft Cruiser Stern
<b>Year:</b>	2006

### Description

Introducing One Day - your passport to adventure on the water! Built in 2006 by Taurus Boats with a unique reverse layout, this 58' Cruiser Stern vessel is your perfect companion for leisurely cruising or full-time living aboard.

Step aboard and discover a thoughtfully designed interior, starting with a spacious Saloon featuring a cosy 3-seater sofa and ample room for additional furnishings. The Galley boasts stainless steel appliances including a sink with mixer tap, a 4-burner gas hob, full-size oven & grill, and a fridge powered by both 12v and 240v.

As you move towards the stern, you'll find a luxurious Bathroom with a full-size Quadrant shower, pump-out toilet, and generous storage. The Bedroom offers a full-size fixed double bed, plenty of storage, and glazed doors opening onto the cratch-covered well deck, perfect for enjoying your morning coffee or evening sundowners.

Equipped with a reliable Vetus 42hp engine and PRM gearbox, One Day has clocked 939 engine hours, with its last service in October 2022. Safety is ensured with a valid Boat Safety Certificate until April 2027, and manoeuvrability is enhanced by a Vetus Bowthruster.

Stay comfortable year-round with Eberspacher diesel central heating and hot water supplied by the engine, calorifier, and immersion heater. Power options include engine, shoreline, solar, and a Mastervolt 2Kw Inverter/Charger, supported by 4 batteries (including a new starter battery installed in May 2024).

With a generous water tank capacity of 450 litres, a waste tank capacity of 150 litres, and a fuel tank capacity of 182 litres, One Day offers the freedom to roam without limitations. External features include a cratch cover to the well deck and a midships side hatch for added convenience.

Though One Day has been lovingly maintained and utilised as a full-time liveaboard, both internally and externally, it would benefit from some TLC and upgrades. This presents a unique opportunity for the savvy buyer to acquire a well-equipped vessel at a competitive price. Don't miss your chance to embark on countless adventures aboard One Day!

#### Disclaimer

Whilst every care has been taken in the preparation of these specifications, no guarantee is given or implied as to their accuracy. These particulars are intended only as a guide and they do not constitute a term of any contract. Lakeland Leisure Estates Ltd advises prospective purchasers to obtain an independent survey from a qualified Marine Surveyor to satisfy themselves as to the condition of the craft.

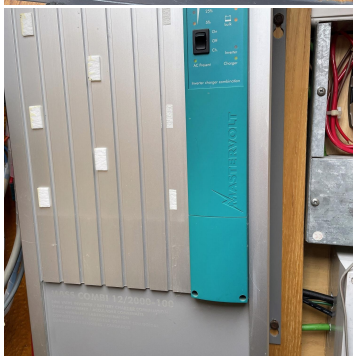
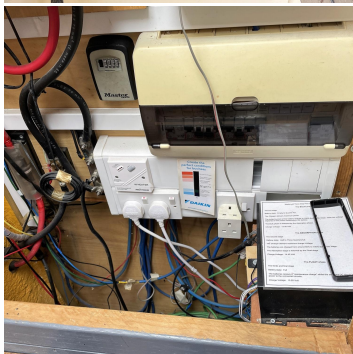
Contact Us

Call: 07585 956804

Email: [andy@lakelandleisureboatsales.co.uk](mailto:andy@lakelandleisureboatsales.co.uk)

[www.lakelandleisureboatsales.co.uk](http://www.lakelandleisureboatsales.co.uk)





## Additional Specs

**Boat Style:** 58ft Cruiser Stern – Reverse Layout

**Year Built:** 2006

**Hull By/ Fit out by:** Taurus Boats / Owner Fit Out

**Layout stern to bow:** Saloon, Galley, Bathroom, Bedroom

**Engine and gearbox:** Vetus 42hp / PRM

**Engine hrs and last service:** 939 / October 2022

**Berths:** 2 + 2 (Room for sofa bed)

**Boat Safety Certificate:** 17/04/2027

**Last Blacking & type:** October 2022 / 3 C Bitumen Blacking

**Hull thickness:** 10:6:4

**Inspection hatch and location:** Weed Hatch via Cruiser Stern

**P/out or Cassette:** Pump Out

**Internal cabin height:** 6ft 5"

**Insulation:** Sprayfoam

**Last Survey:** February 2022 (copy available to view)

**External Covers:** Cratch Cover to Well Deck

**Bowthruster:** Yes - Vetus

**Side Hatches and location:** 1 x Midships

**Batteries:** 4 = 1 x Starter (New May 2024) & 3 x Domestic

**Electric Supply:** Engine, Shoreline, Solar + MPPT, 3 x Domestic Batteries, Mastervolt 2Kw Inverter / Charger

**Hot Water Supply:** Engine, Calorifier, Immersion

**Central heating type:** Eberspacher diesel boiler to radiators etc

**Gas Cylinders No & type:** 2 x 13Kg / Propane

**Saloon description:** 3-Seater Sofa plus ample room for additional free-standing furniture and TV etc

**Water tank capacity:** 450 Litres approx.

**Waste tank capacity:** 150 Litres approx.

**Fuel tank capacity:** 182 Litres approx.

### Disclaimer

Whilst every care has been taken in the preparation of these specifications, no guarantee is given or implied as to their accuracy. These particulars are intended only as a guide and they do not constitute a term of any contract. Lakeland Leisure Estates Ltd advises prospective purchasers to obtain an independent survey from a qualified Marine Surveyor to satisfy themselves as to the condition of the craft.

Contact Us

Call: 07585 956804

Email: [andy@lakelandleisureboatsales.co.uk](mailto:andy@lakelandleisureboatsales.co.uk)

[www.lakelandleisureboatsales.co.uk](http://www.lakelandleisureboatsales.co.uk)

