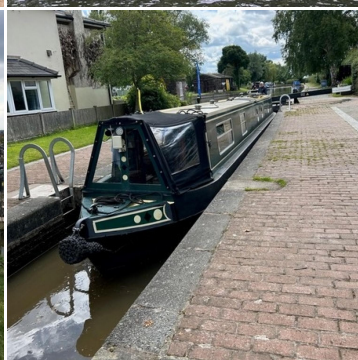




# BOAT SALES

LAKELAND LEISURE ESTATES



## Emily - Semi Traditional

**Price: £58,000**

### Key Features

<b>Berths:</b>	6
<b>Length &amp; Type:</b>	60ft Semi Trad
<b>Year:</b>	2005

### Description

Emily is a beautifully crafted 60ft semi-traditional narrowboat that combines timeless design with modern features. Built in 2005 by Amber Boats, known for their quality craftsmanship, Emily offers an exceptional cruising experience with a cosy, homely feel. Ideal for both leisure cruises and long-term living, this narrowboat boasts an intelligently designed layout and high-quality fittings throughout. The boat's spacious interiors, thoughtful details, and reliable engine make it an excellent choice for those seeking both comfort and adventure on the water.

The semi-traditional stern of Emily offers a large, sheltered rear deck, perfect for enjoying scenic views while cruising or relaxing at the dock. It's equipped with a rear deck cover to protect it from the elements when moored, adding to its practicality. As you step inside, the layout opens up to a thoughtfully designed interior, with ample space throughout. The boat's internal height of 6'6" ensures a comfortable, airy feel in all areas, while the insulated hull keeps the temperature regulated. Emily features a U-shaped galley, designed for ease of use and ample storage, where you'll find everything you need for preparing meals, including an oven, 4-ring hob, microwave, fridge with freezer section, and a stainless steel sink. The galley is well-lit, offering work surfaces both above and below the units, ideal for food preparation.

The lounge area, bathed in natural light from the windows, is a cosy retreat with an L-shaped sofa that easily converts into a double bed for extra sleeping space. Underneath the sofa, you'll find plenty of hidden storage, making it ideal for longer trips. The lounge comes equipped with a TV/DVD player, Wi-Fi, and two table options, allowing flexibility depending on your needs. Whether you're watching a film, enjoying a meal, or simply relaxing, the lounge offers a welcoming atmosphere. For those cooler months, the Webasto central heating system, supported by 4 diesel-fed radiators, ensures the space stays warm and comfortable throughout the year.

The master bedroom is a peaceful sanctuary, featuring a fixed extendable double bed and plenty of storage in the form of a 4-drawer cabinet, wardrobe, and over-bed cupboards. There's even a TV for personal entertainment. The clever use of under-gunnel storage maximizes space and helps keep the room tidy. The second bedroom is equally versatile, with two single beds that can be converted into a large double bed. It's a bright and airy room with roof lights and reading lights, making it a perfect space for rest and relaxation.

The walk-through bathroom is designed with practicality in mind, offering a large shower, pump-out toilet, sink with vanity unit, and ample storage for toiletries and personal items. The layout ensures that it remains functional and easy to use, whether you're getting ready for a day of cruising or winding down after a long one. The water system, supplied by the calorifier, Webasto, and engine, ensures a consistent hot water supply, while the 810-litre water tank capacity gives you plenty of fresh water for your daily needs.

Powered by a Barrus Shire engine, Emily offers reliable performance, with a recent service conducted in December 2024, ensuring the engine is in top condition for cruising. The 210-litre fuel tank ensures long-distance travel without constant refuelling, while the two pump-out tanks, with a combined capacity of 900 litres, provide plenty of capacity for waste management on longer voyages. The boat's electrical system is robust, with 240V shoreline power, a 3.5Kw inverter, and a 40A mains charger keeping the batteries topped up. The solar panels, which include a controller, further reduce the need for external power sources, making Emily an eco-friendly option for cruising.

Throughout the boat, there's a perfect balance of form and function. Clever storage options, such as under-sofa compartments, gunnel cupboards, and overhead cabinets, ensure you'll never run out of space for your personal items. The solar panels provide a renewable energy source, while the 4 domestic batteries and starter battery ensure power for lights, appliances, and electronics. With two gas cylinders, a powerful Webasto heating system, and generous water and fuel capacities, Emily is ready to take you on your next adventure, whether it's a weekend getaway or an extended voyage across the waterways.

Emily is the ideal boat for those looking for a home on the water, with a perfect balance of comfort, style, and practicality. The semi-traditional layout offers plenty of living space for a couple or small family, while the modern features, including heating, hot water, and electrical systems, ensure you'll enjoy life aboard in comfort and style. Whether you're exploring canals or living aboard full-time, Emily is ready to provide a beautiful, reliable home on the water.

### Disclaimer

Whilst every care has been taken in the preparation of these specifications, no guarantee is given or implied as to their accuracy. These particulars are intended only as a guide and they do not constitute a term of any contract. Lakeland Leisure Estates Ltd advises prospective purchasers to obtain an independent survey from a qualified Marine Surveyor to satisfy themselves as to the condition of the craft.

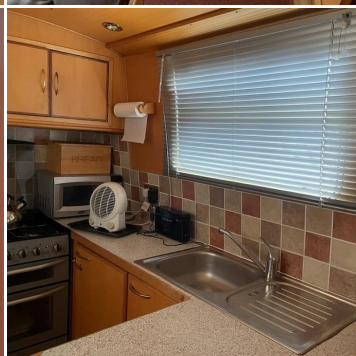
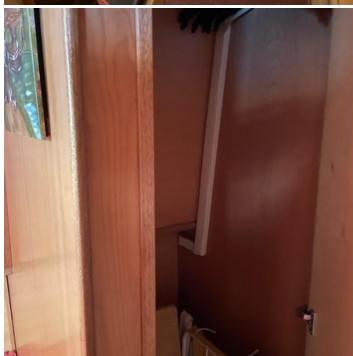
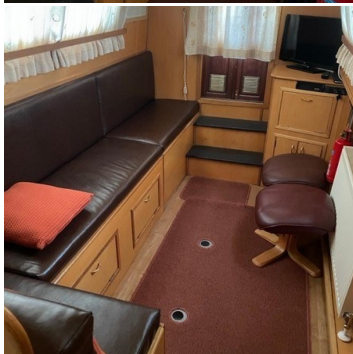
Contact Us

Call: 07748036638

Email: [saul@lakelandleisureboatsales.co.uk](mailto:saul@lakelandleisureboatsales.co.uk)

[www.lakelandleisureboatsales.co.uk](http://www.lakelandleisureboatsales.co.uk)





## Additional Specs

- **Length/ Boat Style:** 60' Semi trad stern
- **Year Built:** 2005
- **Hull By/ Fit out by:** Amber boats
- **Engine and gearbox:** Barrus Shire
- **Engine hrs/Last Service:** Dec 2024
- **Berths:** 2+2+2
- **Boat Safety Certificate:** March 2025
- **Last Blacking & type:** 2 pac epoxy September 2020
- **Hull thickness:** 10:6:4
- **P/out or Cassette:** Pump out 2 tanks
- **Internal cabin height:** 6'6"
- **Insulation:** Sprayfoam
- **Last Survey:** Feb 2021
- **External Covers:** Cratch and rear deck cover
- **Batteries:** 4 domestic 160AH & 1 starter 110AH
- **Electric Supply:** 240v shoreline, 3.5Kw inverter
- **Galvanic Isolator:** Yes
- **Hot Water Supply:** Calorifier, Webasto, Engine
- **Cabin Heating:** Webasto
- **Central heating type:** 4 x diesel fed radiators from Webasto
- **Gas Cylinders No & type:** 2 x 13kg
- **Water Tank capacity:** 810 litres
- **Fuel tank capacity:** 210 litres
- **Pump Out Location Capacity:** 900 litres in 2 tanks
- **Additional Info:** 2 x solar panels + controller, 40A mains charger, Aluminium boarding ladder/plank

### Disclaimer

Whilst every care has been taken in the preparation of these specifications, no guarantee is given or implied as to their accuracy. These particulars are intended only as a guide and they do not constitute a term of any contract. Lakeland Leisure Estates Ltd advises prospective purchasers to obtain an independent survey from a qualified Marine Surveyor to satisfy themselves as to the condition of the craft.

Contact Us

Call: 07748036638

Email: [saul@lakandleisureboatsales.co.uk](mailto:saul@lakandleisureboatsales.co.uk)

[www.lakandleisureboatsales.co.uk](http://www.lakandleisureboatsales.co.uk)

